

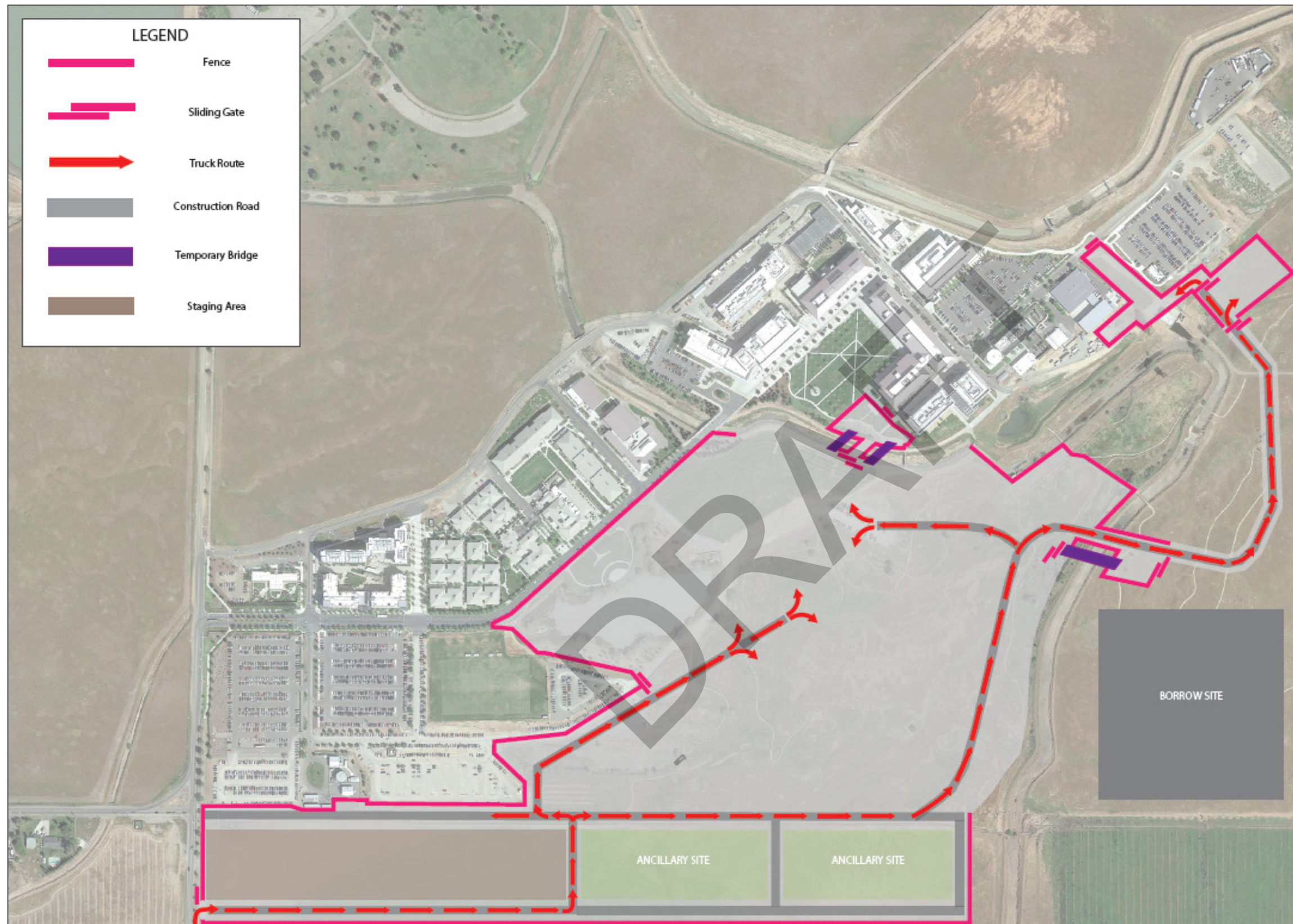
The 2020 Project will be delivered in three phases between 2018 and 2020.

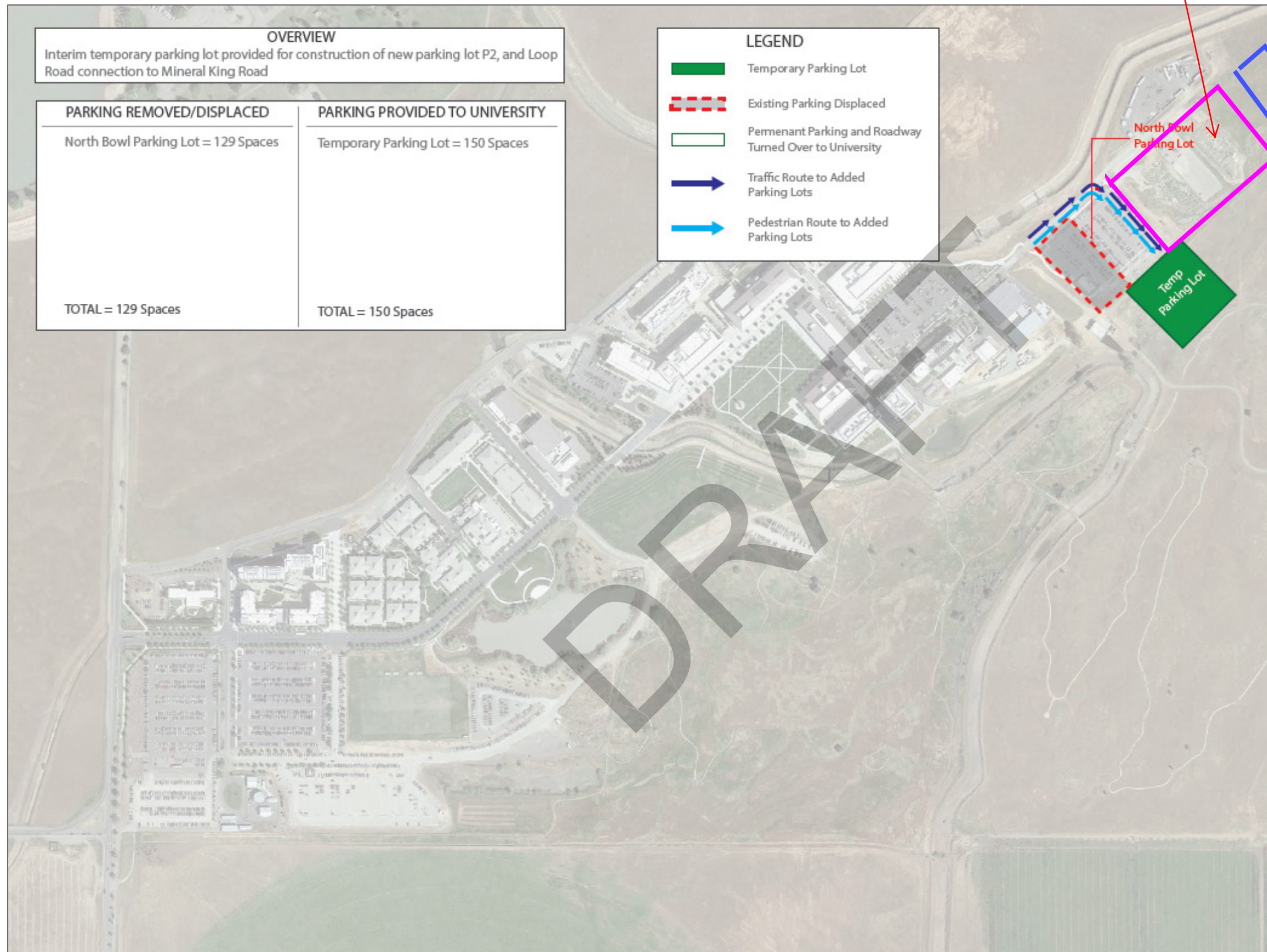
By 2020, the 2020 Project will have added 1.2 million GSF of new space for teaching and research, housing, dining, student life, and athletics to accommodate 10,000 students. The first set of facilities will be complete by Fall 2018; the second set of facilities by Fall 2019; and the balance by Fall 2020.

4.2.2. (c)

FIGURE L1 – OVERVIEW OF SITE LOGISTICS FOR PHASE A (EARLY WORKS), PHASE B (CAMPUS INFRASTRUCTURE), AND PHASE C (CENTRAL UTILITY PLANT)

The shaded area on the diagram illustrates the construction areas where work will be taking place for site mobilization, campus infrastructure work (loop road, bridges, utilities, and temporary parking), and the existing Central Utility Plant. Access into the project site will be restricted through the Ancillary site through a designated road for construction vehicles. Chain link fencing will be installed along the site boundary with gates at different locations for primary access and emergency access. Construction vehicles and equipment will mobilize on site through Loop Road in order to complete site excavation, utility relocation, and build out of the temporary parking lot adjacent to the North Bowl parking lot. Mobile cranes will be utilized as necessary throughout the site for the duration of the project. Temporary bridges will be provided at the designated locations on the logistics diagram to allow for construction access between sites as well as to support temporary utilities. Careful consideration will be taken place to protect the campus pedestrian, bicycle, and vehicular traffic while site construction takes place.





North Bowl Phase 2, plus extension

New Fleet Lot

UC Merced 2020 Project

4.2.2. (c)
L7 – SITE PARKING PHASING PLAN

A parking sequencing plan has been developed to accommodate any parking areas that will need to be demolished or displaced during the course of the project. The Phase B Parking Sequence Drawings 1 through 4 indicate how parking will be provided at each phased deliverable while construction takes place on site.

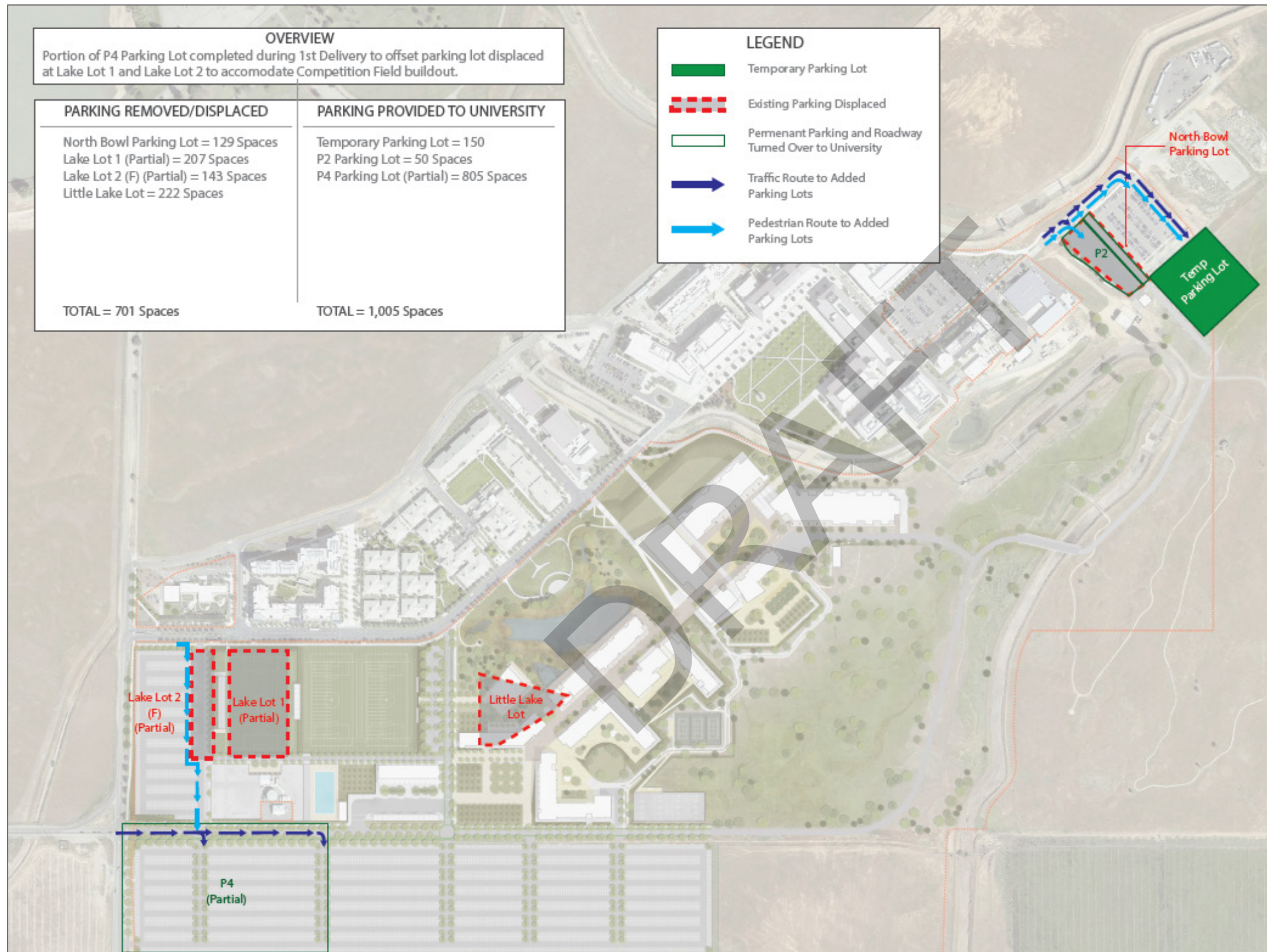
L7.1 – PHASE B PARKING SEQUENCE 1

A temporary parking lot will be built near the existing North Bowl Parking lot to provide 150 parking spaces. This temporary lot will be accessible through the North Bowl Parking lot as indicated on the diagram. The spaces in the temporary parking lot will be provided to offset the parking areas in the North Bowl Lot that will need to be demolished in order to construct the new P2 parking lot as well as the Loop Road connection to Mineral King Road.

4.2.2. (c)

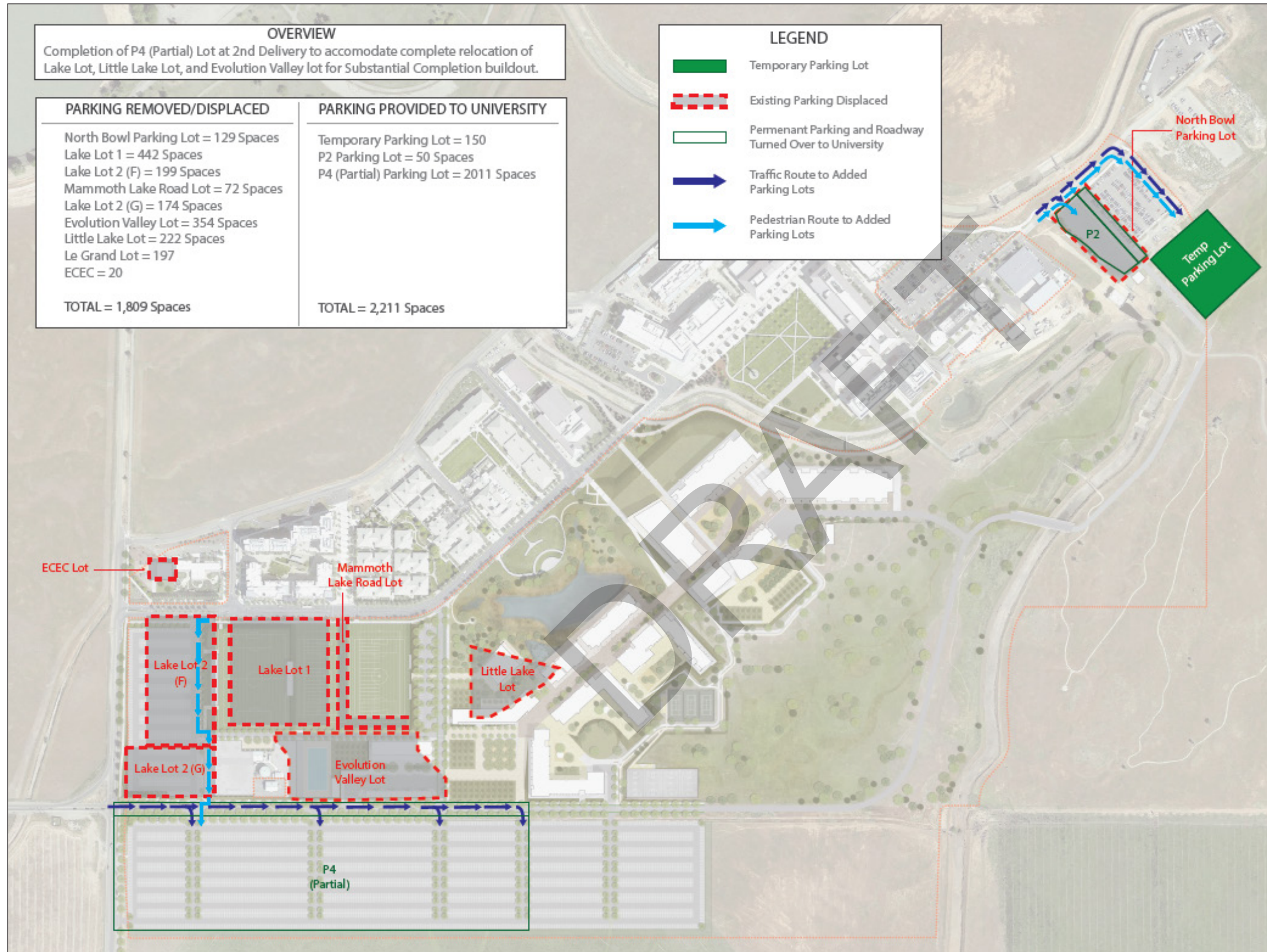
L7-2 – PHASE B PARKING SEQUENCE 2

By the completion of 1st Delivery, portions of the P4 parking lot will be built and turned over to the University. Additionally, the P2 parking lot will also be constructed and turned over to the University at the end of 1st Delivery. In total, this will provide 1,005 parking spaces for the University personnel to use. A portion of Loop Road will be fully completed in order for University personnel to access the portions of the P4 parking lot that have been turned over by 1st Delivery. The 1,005 parking spaces will be provided to offset the parking areas that will be demolished at Lake Lot 1, Lake Lot 2, and Little Lake Lot in order to build the Competition Field for 2nd Delivery as well as prepare for other portions of the Substantial Completion Delivery.



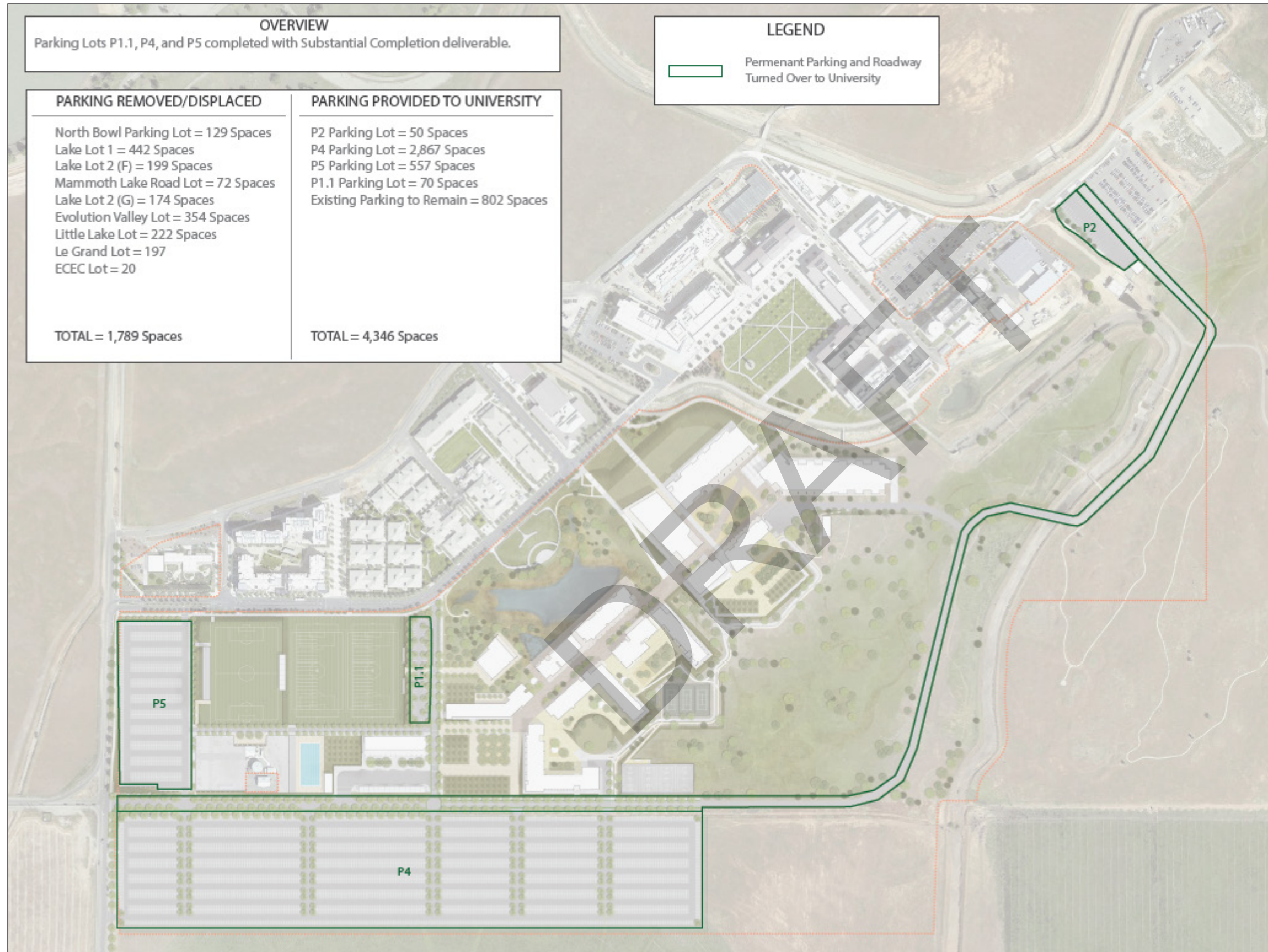
4.2.2. (c)
L7-3 – PHASE B PARKING SEQUENCE 3

By the completion of 2nd Delivery, additional portions of the P4 parking lot will be turned over to the University for their parking needs. These parking areas will be accessible through a portion of Loop Road that connects to Lake Road as indicated on the diagram. The existing Temporary Lot will also remain for the University to use. In total, there will be 2,211 parking spaces provided by the completion of 2nd Delivery, which will accommodate the displacement of the parking spaces in Lake Lot 2, Lake Lot 1, Mammoth Lake Road Lot, Evolution Valley Lot, and Little Lake Lot. The displacement of these parking spaces is necessary for the construction of the deliverables in the Substantial Completion phase.



4.2.2. (c)
L7-4 – PHASE B PARKING SEQUENCE 4

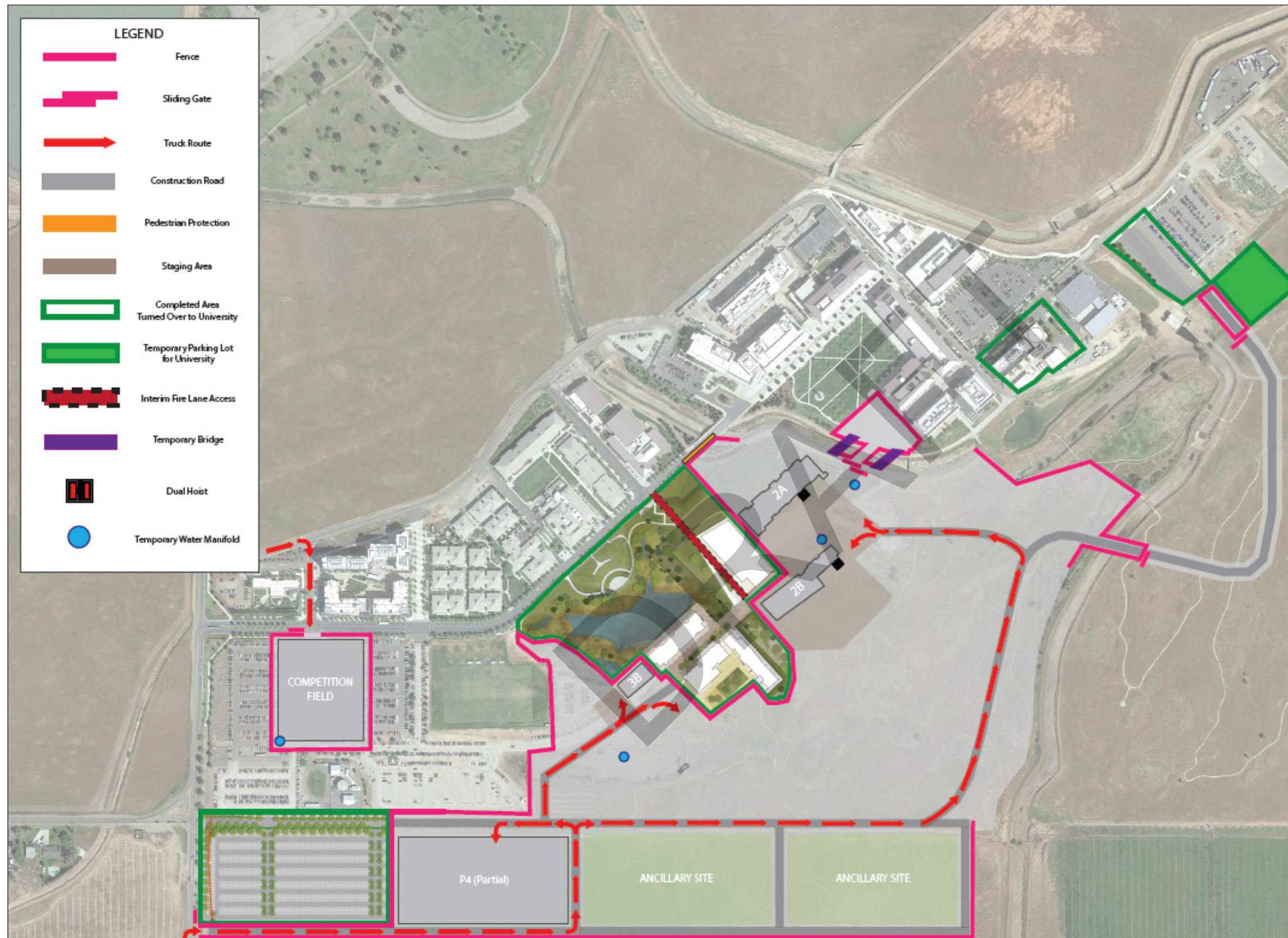
At the time of Substantial Completion, new parking areas will be provided in P5, P1.1, and the remained of the P4 parking lot. There will be 3,544 new parking spaces built by Substantial Completion and 802 parking spaces to remain, which make a total of 4,346 parking spaces provided by the end of Substantial Completion. The remaining portion of infrastructure on Loop Road will be complete.



4.2.2. (c)

L10 – OVERVIEW OF SITE LOGISTICS FOR PHASE D (COMPLETION OF 1ST DELIVERY) AND PHASE E (2ND DELIVERY CONSTRUCTION APPROACH) **FALL 2018**

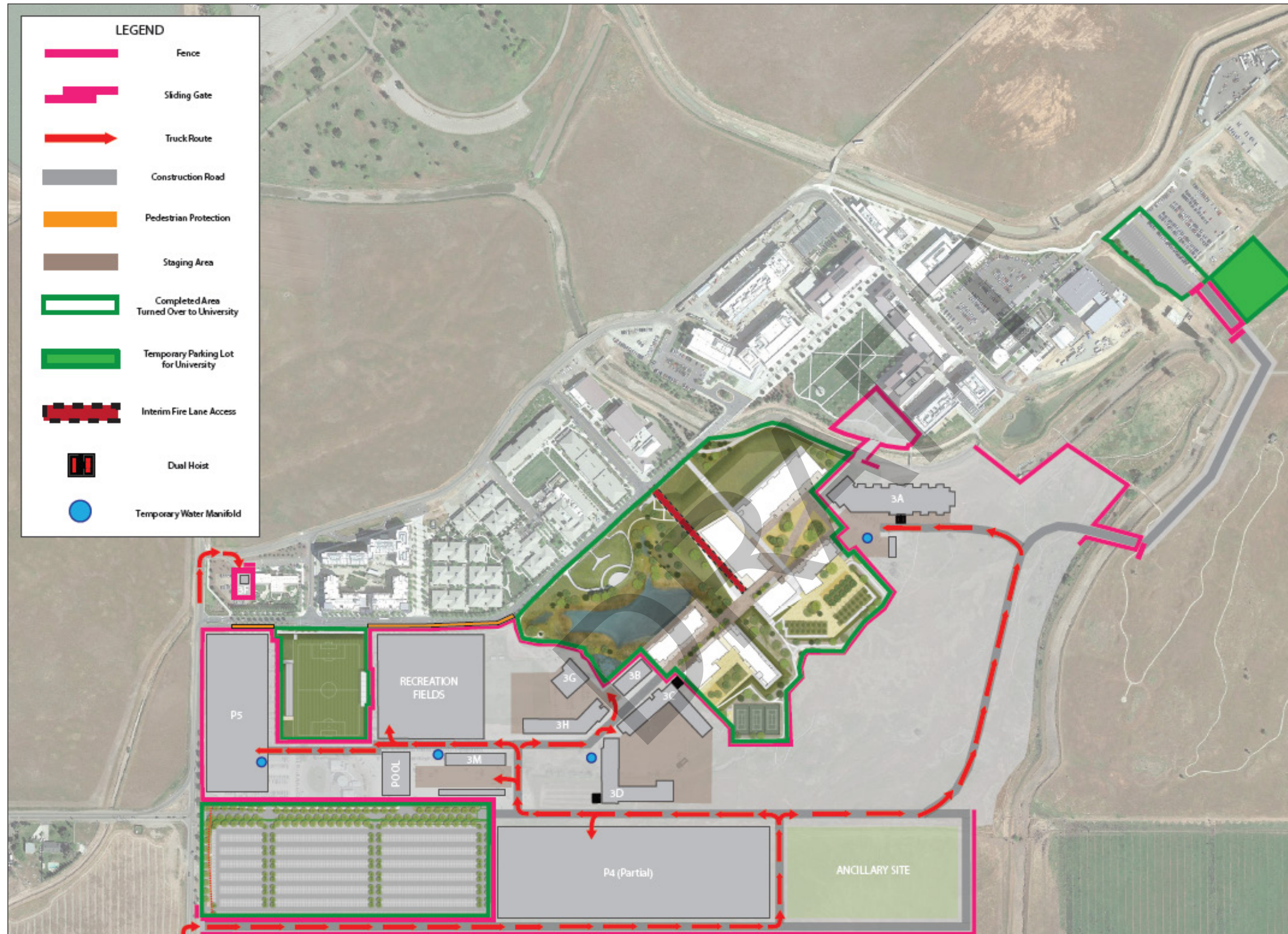
By the completion of 1st delivery, the areas outlined in green will be turned over to the University. An interim fire lane road will be provided, as indicated on the logistics drawing, to allow for fire truck access from Scholar's Lane in case of an emergency. By Substantial Completion, the interim fire lane will become the permanent site landscape for that area. Parking lot spaces will be turned over to the University along with specific portions of Loop Road that will be used to access those parking areas. The project site boundary will expand to include some portions of Lake Road Lot 1 and 2 in order to prepare for the buildout of the Competition Field for 2nd Delivery. The truck route shown on the drawing illustrates the primary path that will be taken to access the specific areas for 2nd Delivery. Access to the project site will be restricted through the Ancillary Lot. Access to the construction area for the Competition Field will be maintained through Emigrant Pass Road as indicated on the diagram. Pedestrian protection will be provided in areas noted on the drawing to safely isolate the construction activities from the existing campus. Local staging areas near Buildings 2A and 2B will be provided to accommodate locations for debris boxes, material laydown areas, construction equipment, and temporary restrooms.



4.2.2. (c)

L11 – OVERVIEW OF SITE LOGISTICS FOR PHASE E (COMPLETION OF 2ND DELIVERY) AND PHASE F (SUBSTANTIAL COMPLETION CONSTRUCTION APPROACH) **FALL 2019**

By the completion of 2nd Delivery, the project site will expand to include areas to buildout the recreational fields and parking lot P5. The areas outlined in green will be turned over to the University for occupational readiness. The interim fire lane from Scholar's lane, as shown in red on the logistics drawing, will remain throughout the duration of 2nd delivery until the permanent site landscape is installed in Substantial Completion delivery. Staging areas will be provided adjacent to the proposed building locations for Substantial Completion delivery to allow for debris boxes, temporary restrooms, material laydown, and construction equipment. Construction access to the site of the Early Childhood Education Center (ECEC) building will be utilized through Lake Road as indicated on the logistics drawings. Careful consideration will be taken to effectively communicate and coordinate with the University when using Lake Road for construction access to the project site at the ECEC expansion. Dual manlifts will be located for Buildings 3B, 3C, and 3D as shown on the drawing.

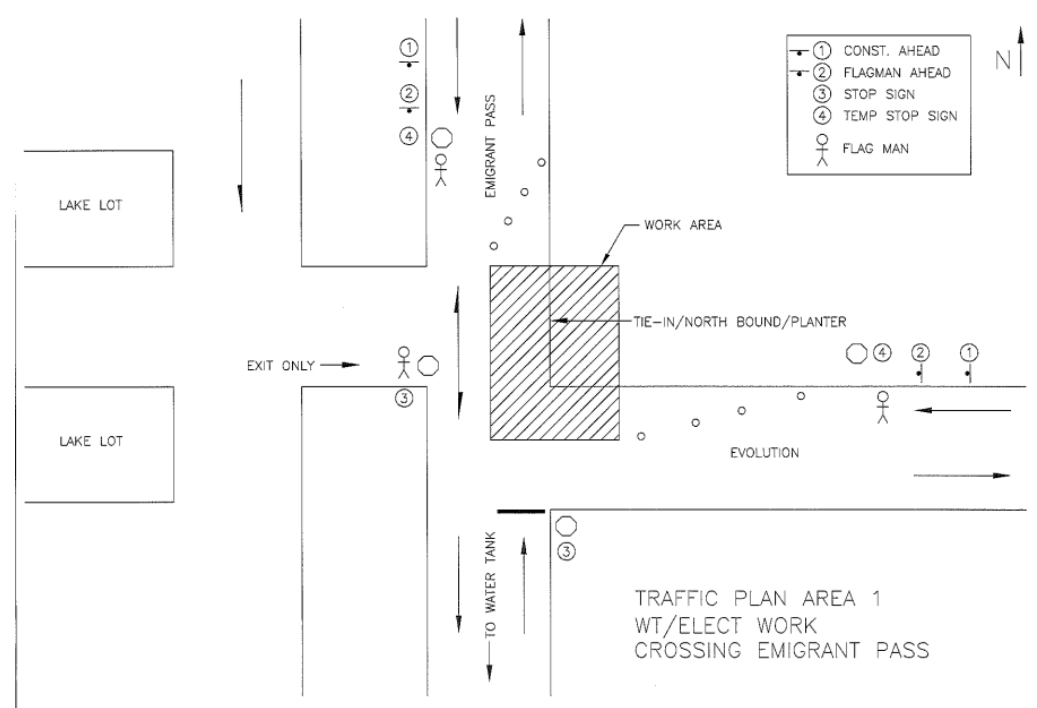




**Construction
Updates**

Parking Impacts

- Scheduled to begin 12/17/16
- Scheduled completion 1/6/17
- Coordination meeting to take place week of 12/12/16

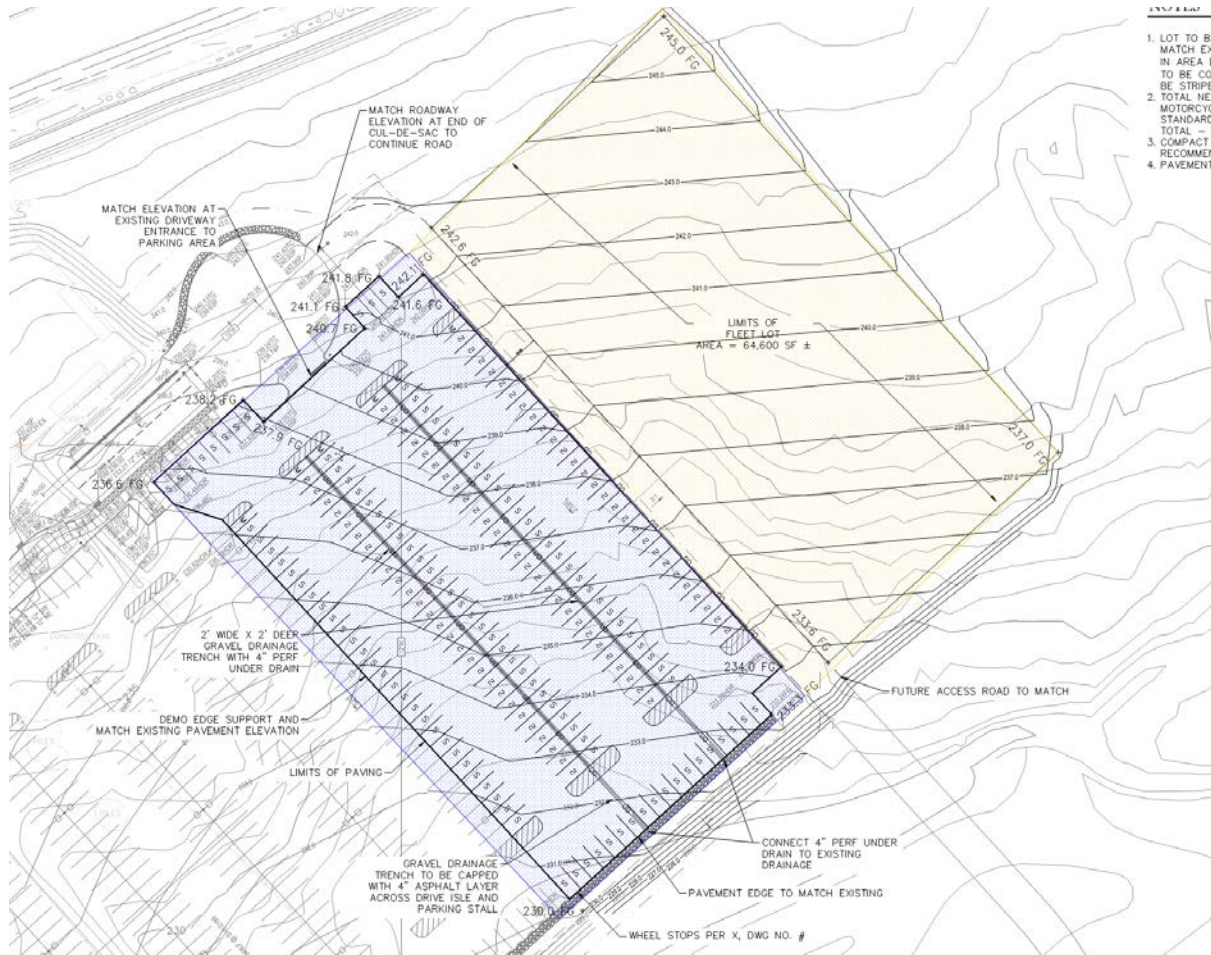


P3 Parking

-Scheduled Completion 1/17/17

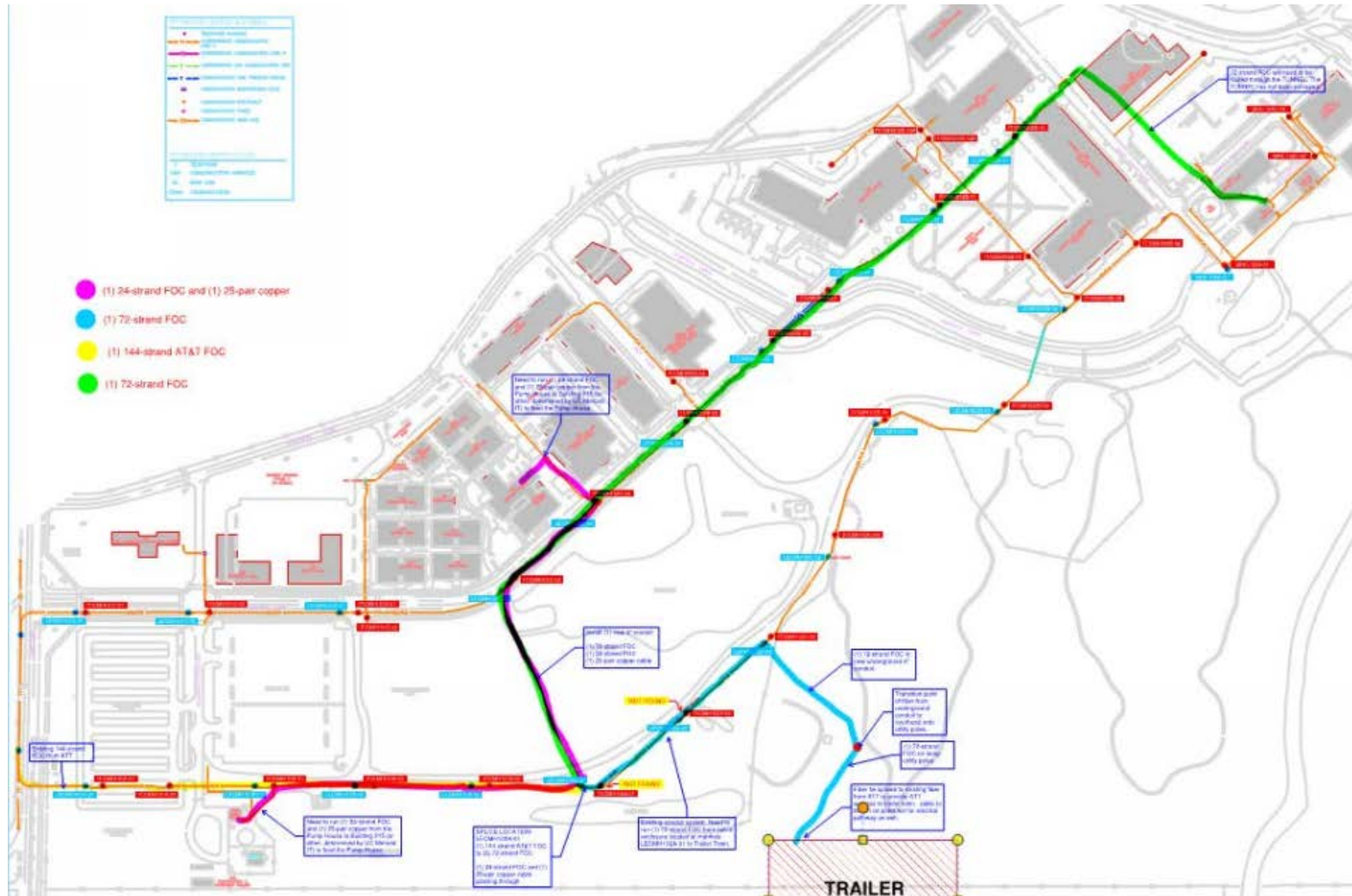
-Fleet Parking to be relocated week of 12/12/16 (weather dependant)

-Hydrant Tie-In taking proposed between 12/19-12/27 (Coordination Meeting 12/8/16)



Telecom Impacts

- Shutdown scheduled for 12/22/16
- Coordination Meetings held 11/1/16, 11/7/16, 11/18/16 next meeting 12/9/16.

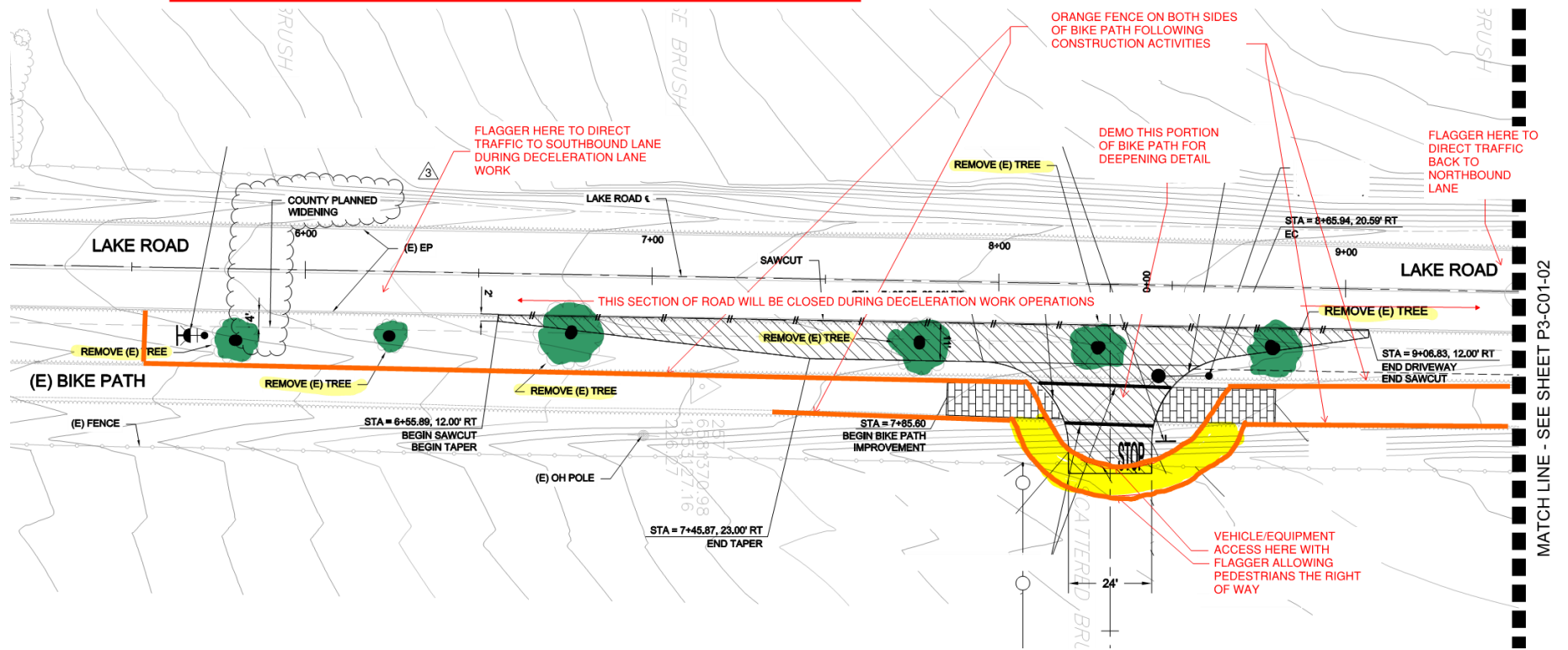


Lake Road

- Paving new bike path 12/19/16
- Lane closure 12/21-12/23/16

BEFORE BETWEEN SIGNS, IF TWO SPEED LIMIT SIGNS IS POSTED, THE ASSUMED SPEED LIMIT IS 55 MPH.

CONSTRUCTION ACTIVITY - PHASE 2



MATCH LINE - SEE SHEET P3-C01-02

Winter Break Work

Scheduled Winter Break Activities

ACTIVITY	12/12	12/13	12/14	12/15	12/16	12/17	12/18	12/19	12/20	12/21	12/22	12/23	12/24	12/25	12/26	12/27	12/28	12/29	12/30	12/31	1/1	1/2	1/3	1/4	1/5	1/6
	M	T	W	T	F	S	S	M	T	W	T	F	S	S	M	T	W	T	F	S	S	M	T	W	T	F
Lake Road Modifications (Temp Entrance)																										
Lake Road Lane Closure											X	X														
Install Lighting, Striping, Signage											X	X														
Open Lake Road																			X							
Earthwork (Package 1)																										
Rough Grade Ancillary Site - Trailer Town	X	X	X	X	X			X	X	X	X															
P-3 Parking Lot (Package 2)																										
Move Fleet Parking 12/10/16																										
General Constructon	X	X	X																							
Exiting Fleet Parking Unavailable	X																									
Install New Waterline & Hydrant			X	X	X																					
Install Lighting Conduits & Bases								X	X	X	X					X	X	X								
Pave Driveways																							X	X	X	
Parking Complete 1/17/16																										
Utilities (Package 3)																										
Ongoing Underground Utilities within 2020 site	X	X	X	X	X			X	X	X	X															
Install Waterline To Ancillary Site								X	X	X	X					X	X	X					X	X	X	X
Taking Parking in Lake Lot								X	X	X	X					X	X	X					X	X	X	X
Bypass Utilities (Package 4A)																										
S-Curve Reroutes (Comm conduits)	X	X	X	X	X			X	X	X																
IT Shutdown											X															
Demo Utilities In S-Curve								X	X	X	X					X	X	X					X	X	X	X
Trailer Town (Package)																										
Trailer Deliveries																							X			